

LIVERPOOL WIND ENERGY STORAGE PROJECT

PROJECT UPDATE & INVESTMENT OPPORTUNITY INFORMATION SESSION – JANUARY 26, 2016

This mailout is intended to provide a brief update on Liverpool Wind Energy Storage Project and to welcome local residents to attend our next meeting scheduled for **7:00PM on January 26, 2016** at the **Liverpool Fire Hall**. This meeting will provide further information on the progress of the Project, and will outline opportunities to invest in Watts Wind Energy Inc.



A 1.5MW community owned turbine installed in 2011 by Watts Wind Energy in Watt Section, Nova Scotia.

WATTS WIND ENERGY INC. IS ORGANIZED AS A COMMUNITY ECONOMIC DEVELOPMENT INVESTMENT FUND (CEDIF) ALLOWING LOCALS TO INVEST, AND THEREBY PARTICIPATE DIRECTLY, IN RENEWABLE ENERGY DEVELOPMENT

PROJECT LOCATION:

The wind turbines will be located on Crown Land approximately 1km north of Nickerson's Pond. The energy storage system will be located at the Innovacorp Demonstration Centre on the former Bowater Mersey Pulp Mill land.

PROJECT DESCRIPTION

The Project will consist of two (2) Enercon (E-92) 2.35 megawatt wind turbines and a Regenerative Air Energy Storage (RAES) System. This is a leading edge Project, being the first of its kind in the world.

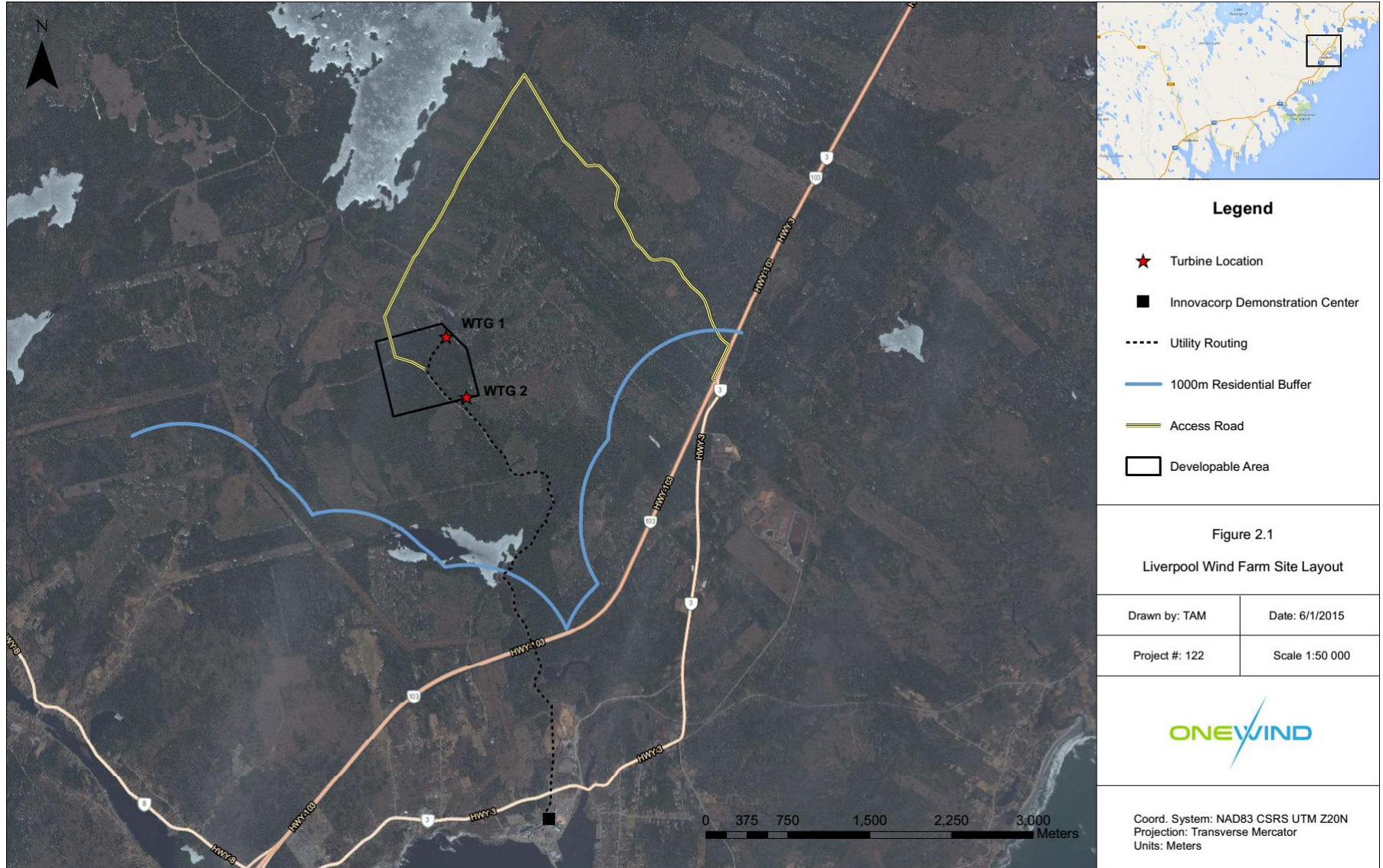
ENVIRONMENTAL ASSESSMENT (EA)

Nova Scotia Environment (NSE) approved the Environmental Assessment on October 28, 2015. The complete EA can be viewed at <https://www.novascotia.ca/nse/ea/liverpool-wind-farm.asp>.

PROJECT SCHEDULE

2015/Q4 EA Report Approved by NSE
2016/Q3 Construction of Turbines
2016/Q4 Operation of Turbines
2017/Q2 Operation of Storage System

**JANUARY 26, 2016 @ 7:00PM
LIVERPOOL FIRE HALL**



Legend

- ★ Turbine Location
- Innovacorp Demonstration Center
- - - - Utility Routing
- 1000m Residential Buffer
- Access Road
- Developable Area

Figure 2.1
Liverpool Wind Farm Site Layout

Drawn by: TAM	Date: 6/1/2015
Project #: 122	Scale 1:50 000



Coord. System: NAD83 CSRS UTM Z20N
Projection: Transverse Mercator
Units: Meters